

Lenovo
OEM Solutions

Smarter
technology
for all

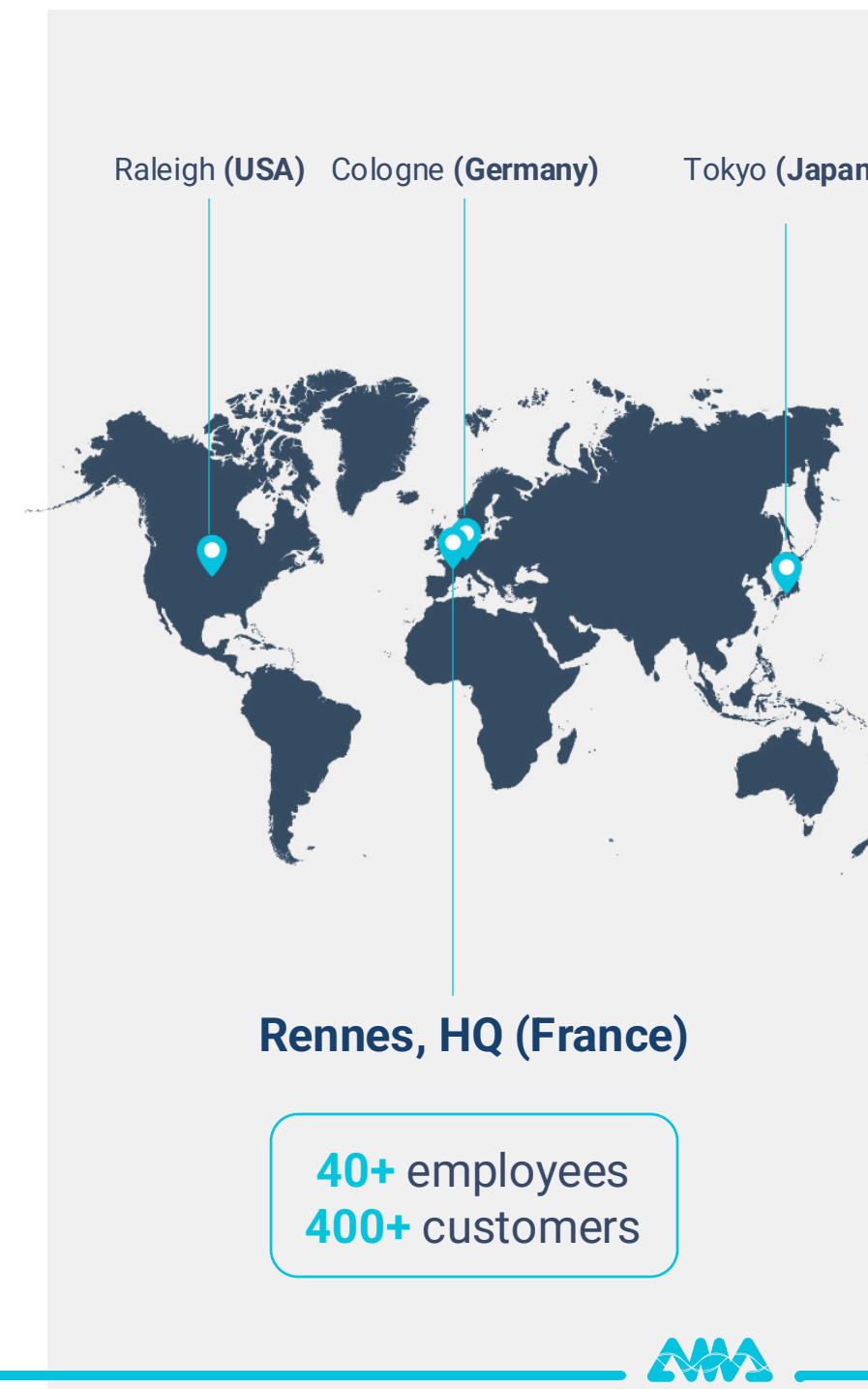
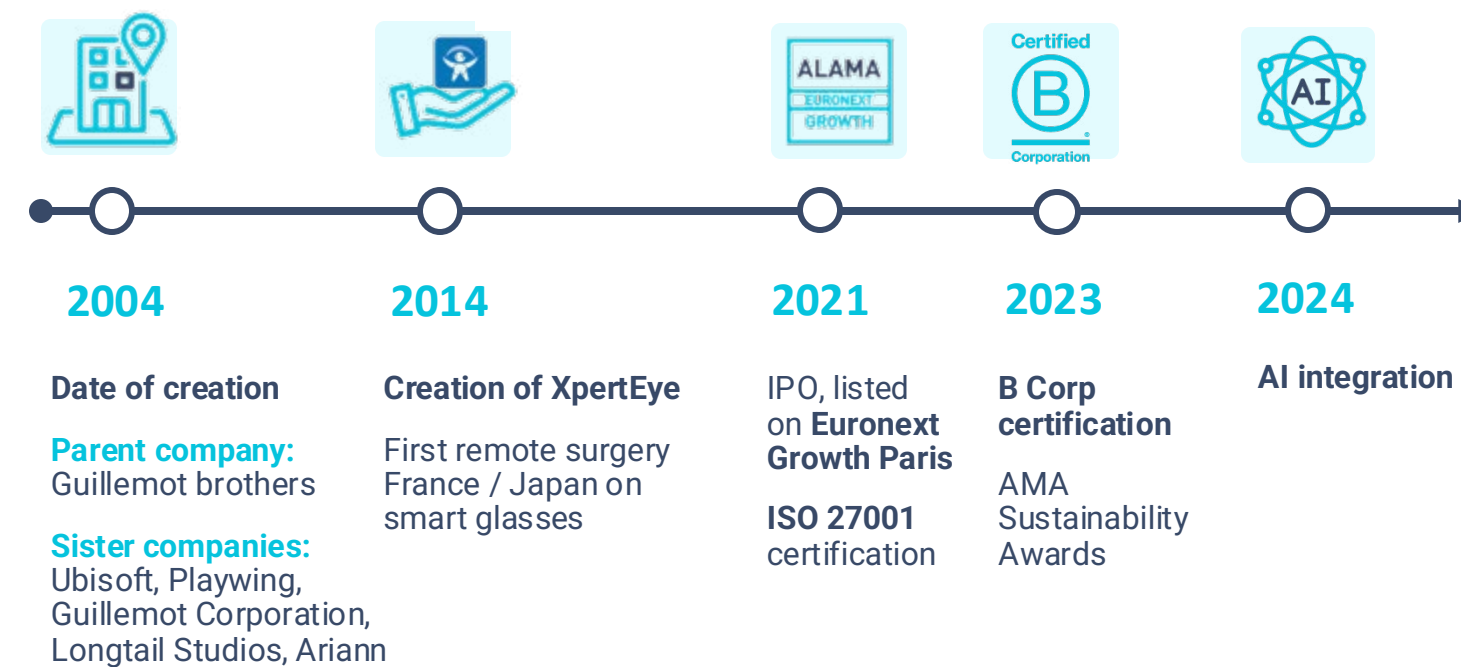
Lenovo

Powering What's Next at the Edge

Davide Patini
OEM Business Developer Manager
Lenovo
dpatrini@lenovo.com
+39 3473267403

2022 Lenovo Internal. All rights reserved.

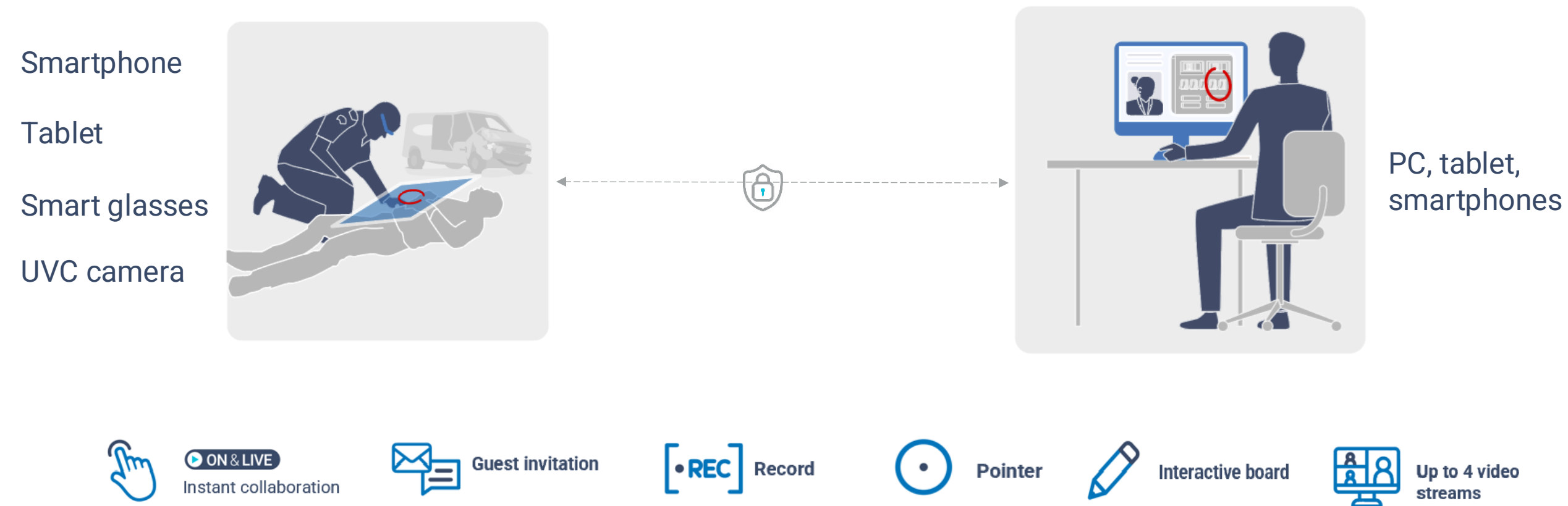
About AMA



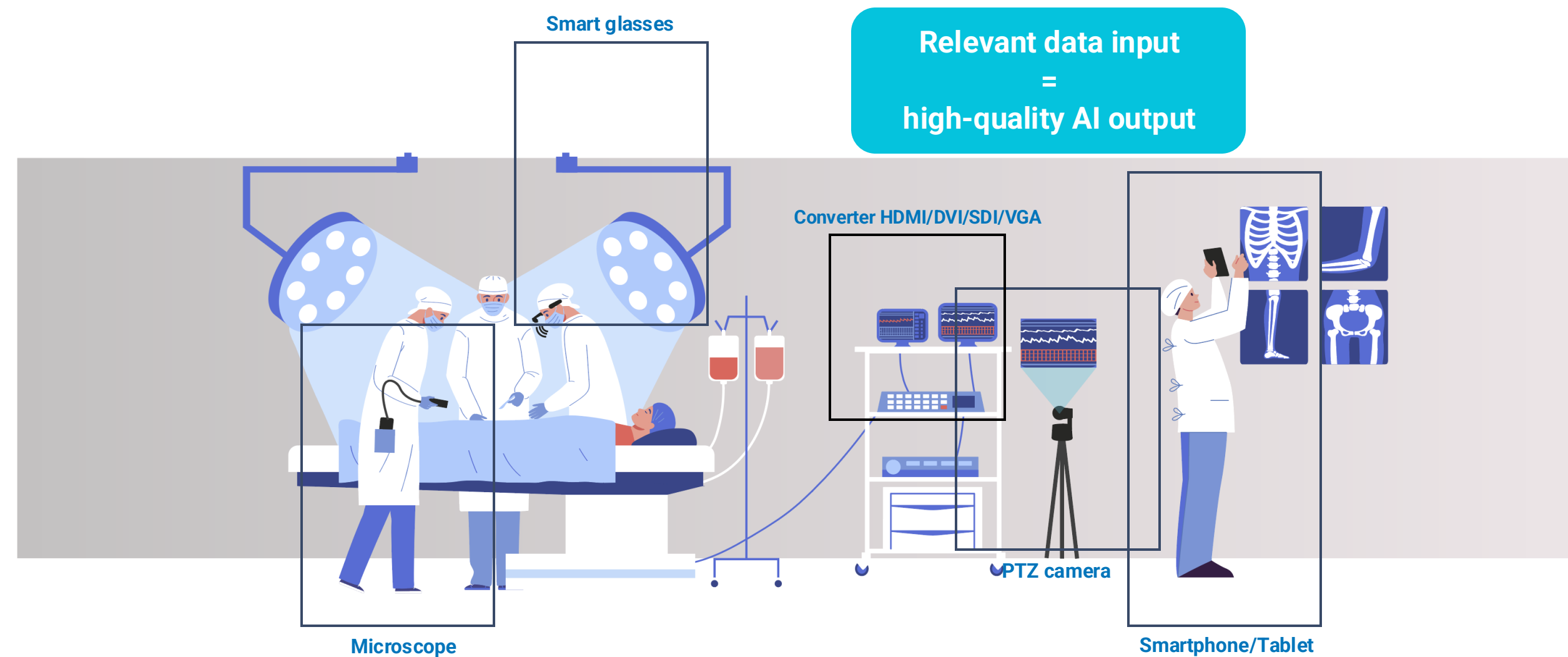


An advanced platform for frontline
knowledge acquisition & sharing

Remote collaboration on any device



Collect seamlessly unique POVs seamlessly



5



Leverage knowledge

- **AI-powered reporting**

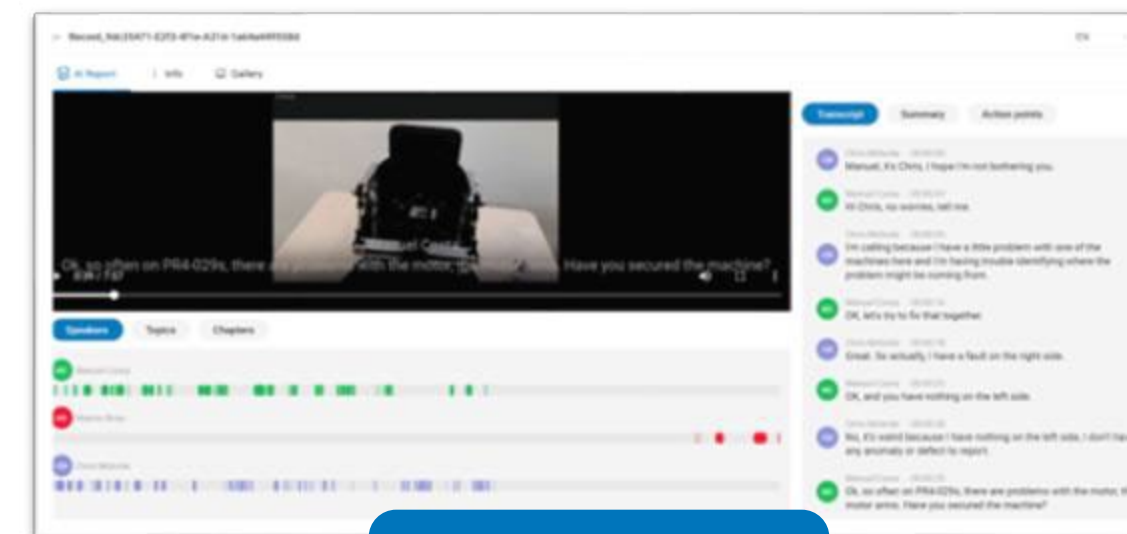
Generate automatically a **detailed report** at the end of each session, capturing key findings, actions taken, and recommendations.

- **AI assistant**

Receive instant **relevant answers and recommendations** during live sessions, extracted from your company data and tailored to your needs.

- **Knowledge base enrichment**

Integrate detailed session reports and recordings into **your knowledge base**, and share operational how-to easily across teams, lines, and sites to drive continuous learning and improvement.



Watch the video



ExpertEye real use cases:

- Belgium - Jesse Zeikenhuis Hospital (telesurgery and education)
- Paris – Greater Paris University Hospital (APHP) (telesurgery)
- Nantes SAMU 44, Rennes SAMU 35 (public health emergency service)

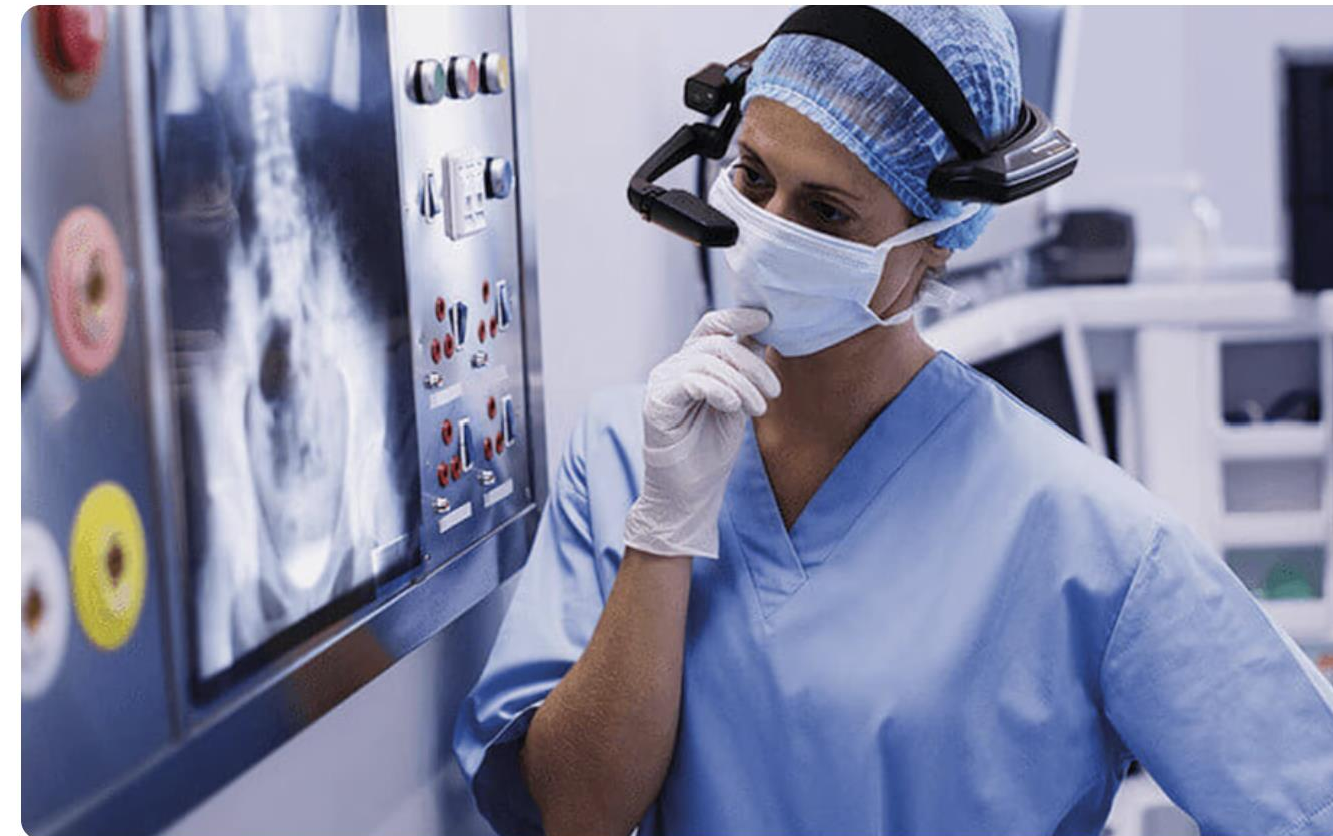




Telehealth

- Live Surgery
- Emergency Care
- Proctoring
- Training

HIPAA Compliant Remote Assistance Solution from AMA With RealWear's Head-Mounted Wearables are now available as a Subscription Offering



Compliance ("compliance") with the American HIPAA (Health Insurance Portability and Accountability Act) regulation requires, for companies that process protected health data (PHI, Protected Health Information), the adoption of rigorous physical, network and procedural security measures

Our customers

Audit & Inspection	>					
Chemicals & Pharma	>					
Construction & Engineering	>					
Energy	>					
Healthcare	>					 
IT & Communication services	>					
Manufacturing	>					  
Transportation	>					 
	>					

Corcym use case



